

PRODUCT FEATURES

VENTRA STERLING F is a multi louvred ventilator that provides an economic, non powered method of ventilation, allowing the removal of large quantities of warm air and / or smoke from a building within a short period of time.

The VENTRA STERLING F is a further development on the already proven VENTRA F but is a response to the increased requirements for air tightness and thermal insulation in certain building designs and applications worldwide. The VENTRA STERLING F is suitable for façade fresh air supply, air and smoke extraction and also façade natural lighting.

The vents are manufactured according to ISO 9001 quality control standards. The vents are formed from high quality corrosion resistant aluminium to ensure low maintenance requirements and water tightness.

Various methods of operation using pneumatic or electric actuators are available. The ventilator design produces a versatile economic unit suitable for a wide range of applications. Available on large dimensions, up to 2400 x 3826 mm (width x length) for HB, 2400 x 3804 mm (width x length) for LB.



Ventra sterling-f



TYPICAL APPLICATIONS

Versatile scope of applications on facades, with an installation angle of 90°. Installations: Industrial buildings, warehouses, logistics centres, shopping centres, atria, schools, stairwells, among others.

MATERIALS

Tempered aluminium, sea water and corrosion resistant (EN AW 5754).
Corrosion resistant bearings.
Built-in weather resistant hydrophobic tape.

Note: aluminum is supplied untreated as standard. Possibility of being supplied with electrostatic painting (in any RAL color).

DIMENSIONS

Opening width: 300 - 2400 mm.
Opening height: 746 - 3826 mm (17 louvres, max.) for HB, 737 - 3804 mm (17 louvres, max.) for LB.

INSTALLATION ANGLE

Individual adjustable from 60° up to 90°.

CONTROLS NATURAL VENTILATION

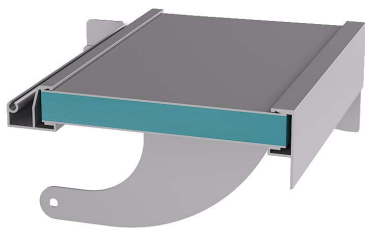
P1: single pipe compressed operation.
P2: double pipe compressed air operation.
M230V: electric motor.

CONTROLS FIRE VENTILATION

PIF: single pipe compressed air operation with fire function.
P2F: double pipe compressed air operation with fire function.
M24V: electric motor.

LOUVRES

- SW** Sandwich panel 25 mm, U-Value=1,65 (W/(m².K))
- PC25** Polycarbonate 25 mm / 9-X structure, clear or opal, U-Value=1,4 (W/(m².K))
- GLASS** Insulated double glass 25 mm, U-Value= 1,1 (W/(m².K))



SW



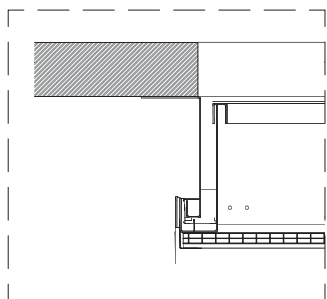
PC25



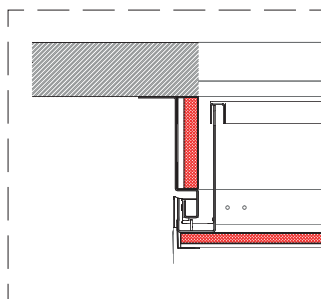
GLASS

BASES

- Single aluminium.
- Double wall aluminium with insulation (just for HB).



DETAIL 01
single aluminium

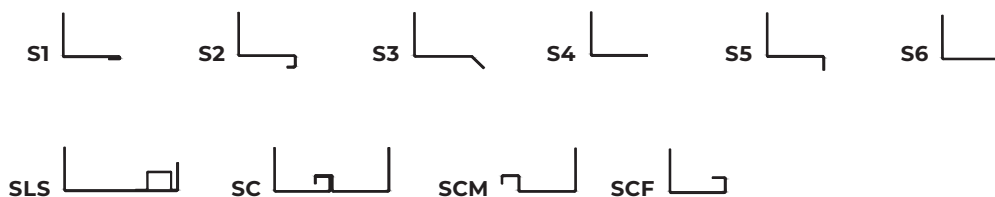


DETAIL 02
Double wall aluminium with
insulation (just for HB).

FLANGES

- S1** Flange for single glass.
- S2** Flange for curtain wall.
- S3** Flange 45° bended.
- S4** Flat Flange
- S5** Flange 90° bended downwards.
- S6** Flange 90° bended upwards.
- SC** Flange for connection with other flange (vents connection). Male or female connection.
- SCM** Flange for male connection.
- SCF** Flange for female connection.

Note: custom flange design and insulated flanges upon request.



DIMENSIONS/LOUVRES TABLE, SW/PC25mm

NUMBER OF LOUVRES		3	4	5	6	7	8	9	10	11	12	13	14	15	16	17	
WIDTH (MM)	LENGTH (MM)																
300	HB	746	966	1186	1406	1626	1846	2066	2286	2506	2726	2946	3166	3386	3606	3826	
600																	
1000																	
...																	
1800	LB	737	944	1164	1384	1604	1824	2044	2264	2484	2704	2924	3144	3364	3584	3804	
2000																	
2400																	

DIMENSIONS/LOUVRES TABLE, GLASS

NUMBER OF LOUVRES		3	4	5	6	7	8	9	10	11	12	13	14	15
WIDTH (MM)	LENGTH (MM)													
500-1100	746	966	1186	1406	1626	1846	2066	2286	2506		2726	2946	3166	3386
1200-1700											-	-	-	-

Note: other dimensions upon request.

WEIGHT

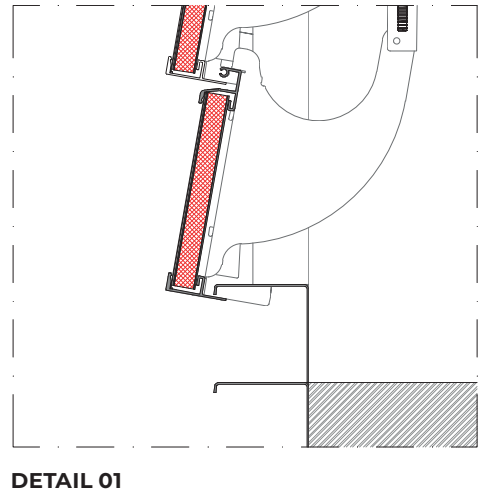
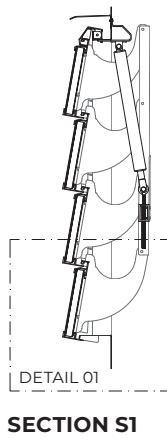
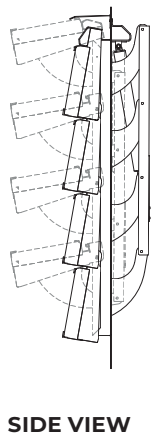
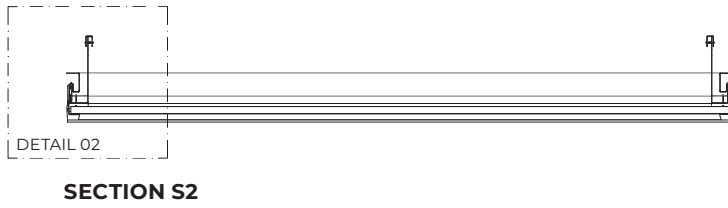
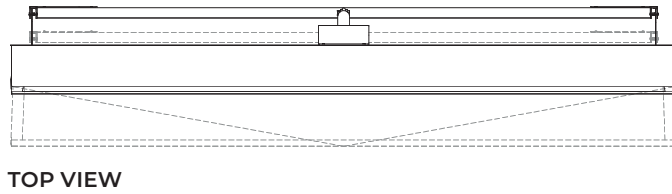
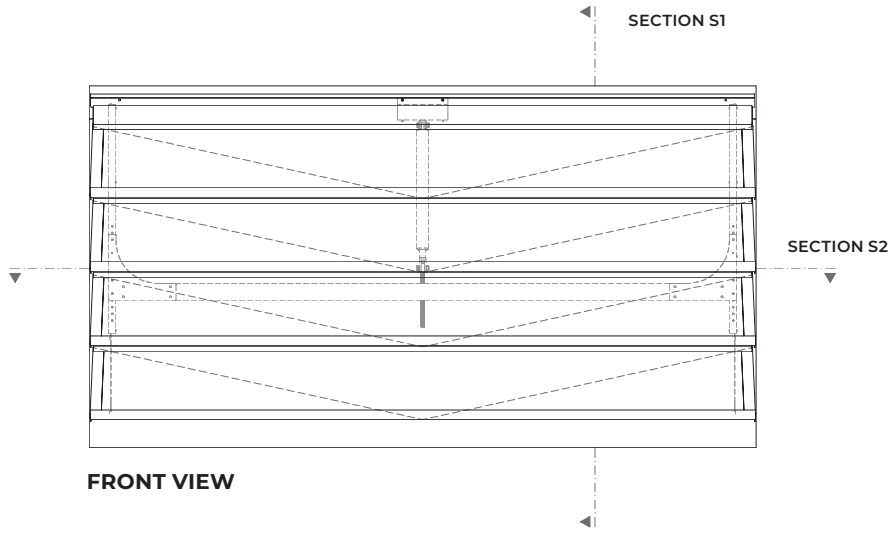
Depends on dimensions and type of infill.

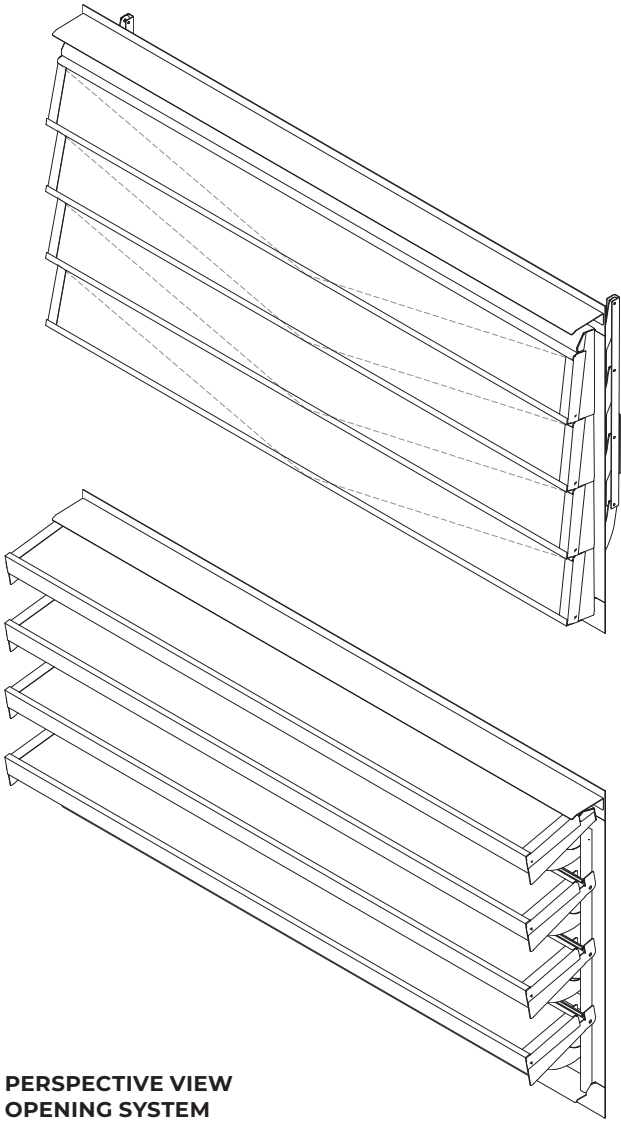
OPTIONS

Custom dimensions.
 Powder-coated design (any RAL colour).
 Bird or insect mesh.
 Thermofuse 68°C / 93°C / 141°C

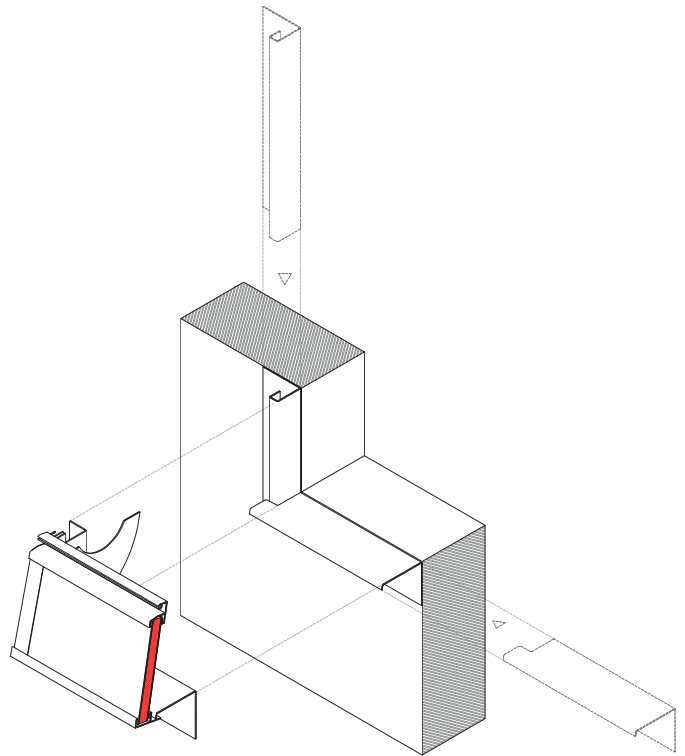
REGULATIONS

The system has been tested and is certified in accordance with EN 12101-2.
 Complies with French standards NF S 61 937-1 and NF S 61 937-7 : natural smoke and heat exhaust ventilation (NSHEV).
 Complies with French standards NF S 61 937-1 and NF S 61 937-8 : actuated safety device for natural air inlet.





PERSPECTIVE VIEW
OPENING SYSTEM



BASE ASSEMBLY PERSPECTIVE